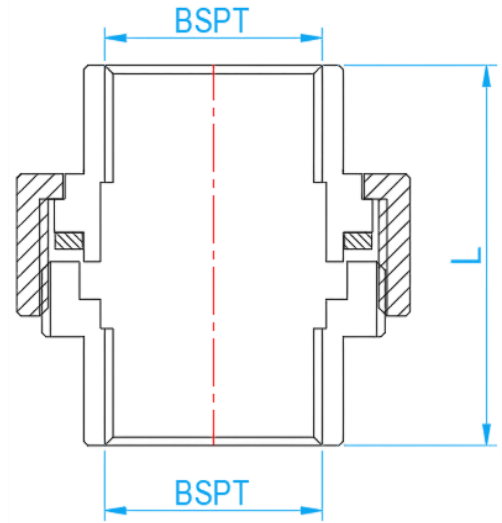
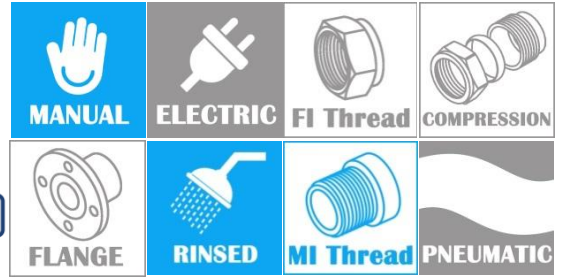


# STAINLESS STEEL 304 THREADED FITTINGS

## UNION

COMPLY WITH BSEN1254-2:1998  
AS/NZS 4020:2018  
SS 375:2015



CROSS SECTIONAL VIEW

### DIMENSIONS

| SKU       | SIZE (inch) | L (mm) | WEIGHT (kg) | PCS/CTN |
|-----------|-------------|--------|-------------|---------|
| SS304U015 | ½" BSPT     | 38.5   | 0.1273      | 250     |
| SS304U020 | ¾" BSPT     | 44.0   | 0.2094      | 150     |
| SS304U025 | 1" BSPT     | 48.0   | 0.2757      | 80      |
| SS304U035 | 1¼" BSPT    | 52.0   | 0.3984      | 60      |
| SS304U042 | 1½" BSPT    | 55.0   | 0.4719      | 40      |
| SS304U050 | 2" BSPT     | 62.0   | 0.8210      | 25      |
| SS304U065 | 2½" BSPT    | 73.0   | 1.2500      | 15      |
| SS304U080 | 3" BSPT     | 80.0   | 1.7550      | 10      |
| SS304U100 | 4" BSPT     | 96.9   | 2.9000      | 6       |